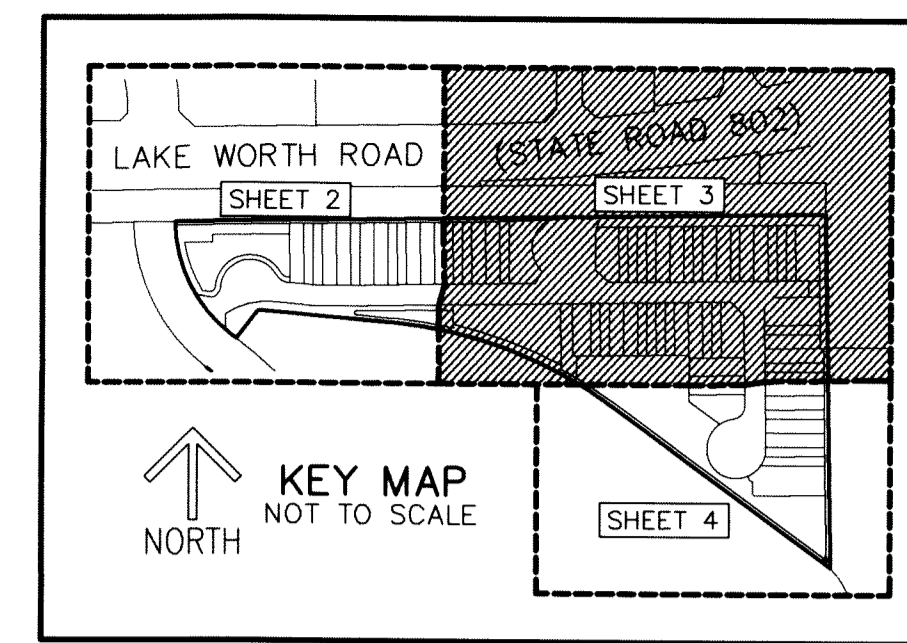


THIS INSTRUMENT PREPARED BY
 DAVID P. LINDLEY
 OF
CAULFIELD and WHEELER, INC.
 SURVEYORS - ENGINEERS - PLANNERS
 7900 GLADES ROAD, SUITE 100
 BOCA RATON, FLORIDA 33434 - (561)392-1991
 CERTIFICATE OF AUTHORIZATION NO. LB3591

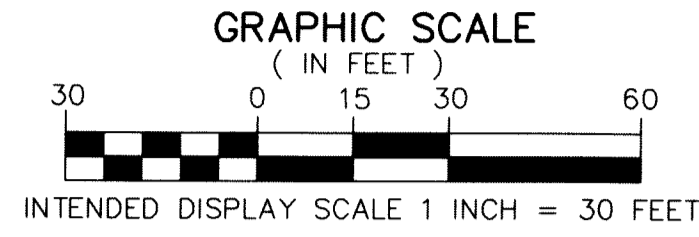
LAKEWOOD COVE

BEING A REPLAT OF A PORTION OF THE GOLF COURSE TRACT, PALM BEACH GOLF CLUB ESTATES PLAT NO. 3,
 AS RECORDED IN PLAT BOOK 29, PAGES 107 AND 108 OF THE PUBLIC RECORDS OF PALM BEACH COUNTY, FLORIDA,
 LYING IN SECTION 27, TOWNSHIP 44 SOUTH, RANGE 42 EAST, PALM BEACH COUNTY, FLORIDA

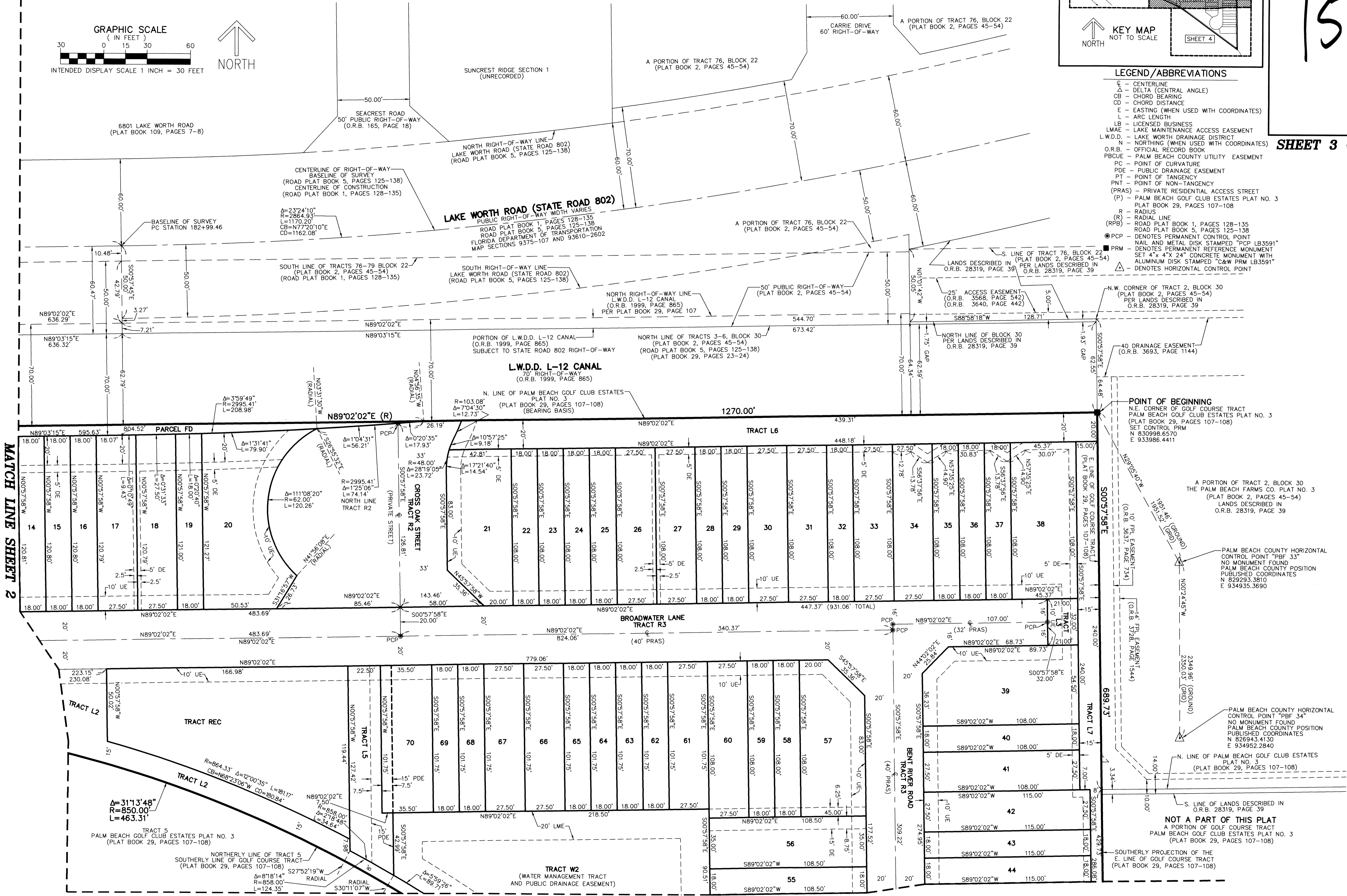


155

SHEET 3 OF 4



- LEGEND/ABBREVIATIONS**
- C - CENTERLINE
 - Δ - DELTA (CENTRAL ANGLE)
 - CB - CHORD BEARING
 - CD - CHORD DISTANCE
 - E - EASTING (WHEN USED WITH COORDINATES)
 - L - ARC LENGTH
 - LB - LICENSED BUSINESS
 - LM&E - LAKE MAINTENANCE ACCESS EASEMENT
 - L.W.D.D. - LAKE WORTH DRAINAGE DISTRICT
 - N - NORTHING (WHEN USED WITH COORDINATES)
 - O.R.B. - OFFICIAL RECORD BOOK
 - PBCUE - PALM BEACH COUNTY UTILITY EASEMENT
 - PC - POINT OF CURVATURE
 - PDE - PUBLIC DRAINAGE EASEMENT
 - PT - POINT OF TANGENCY
 - PNT - POINT OF NON-TANGENCY
 - (PRAS) - PRIVATE RESIDENTIAL ACCESS STREET
 - (P) - PALM BEACH GOLF CLUB ESTATES PLAT NO. 3 PLAT BOOK 29, PAGES 107-108
 - R - RADIUS
 - (R) - RADIAL LINE
 - (RPB) - ROAD PLAT BOOK 1, PAGES 128-135 ROAD PLAT BOOK 5, PAGES 125-138
 - Δ - DENOTES PERMANENT CONTROL POINT NAIL AND METAL DISK STAMPED "PCP LB3591"
 - - DENOTES PERMANENT REFERENCE MONUMENT SET 4" x 4" x 24" CONCRETE MONUMENT WITH ALUMINUM DISK STAMPED "C&W PRM LB3591"
 - - DENOTES HORIZONTAL CONTROL POINT



MATCH LINE SHEET 2

MATCH LINE SHEET 4

POINT OF BEGINNING
 N.E. CORNER OF GOLF COURSE TRACT
 PALM BEACH GOLF CLUB ESTATES PLAT NO. 3
 (PLAT BOOK 29, PAGES 107-108)
 SET CONTROL PRM
 N 830998.6570 E
 933986.4411

A PORTION OF TRACT 2, BLOCK 30
 THE PALM BEACH FARMS CO. PLAT NO. 3
 (PLAT BOOK 29, PAGES 45-54)
 LANDS DESCRIBED IN
 O.R.B. 28319, PAGE 39

PALM BEACH COUNTY HORIZONTAL
 CONTROL POINT "PBF 33"
 NO MONUMENT FOUND
 PALM BEACH COUNTY POSITION
 PUBLISHED COORDINATES
 N 829293.3810
 E 934935.3690

PALM BEACH COUNTY HORIZONTAL
 CONTROL POINT "PBF 34"
 NO MONUMENT FOUND
 PALM BEACH COUNTY POSITION
 PUBLISHED COORDINATES
 N 828943.4130
 E 934952.2840

NOT A PART OF THIS PLAT
 A PORTION OF GOLF COURSE TRACT
 PALM BEACH GOLF CLUB ESTATES PLAT NO. 3
 (PLAT BOOK 29, PAGES 107-108)
 SOUTHERLY PROJECTION OF THE
 E. LINE OF GOLF COURSE TRACT
 (PLAT BOOK 29, PAGES 107-108)